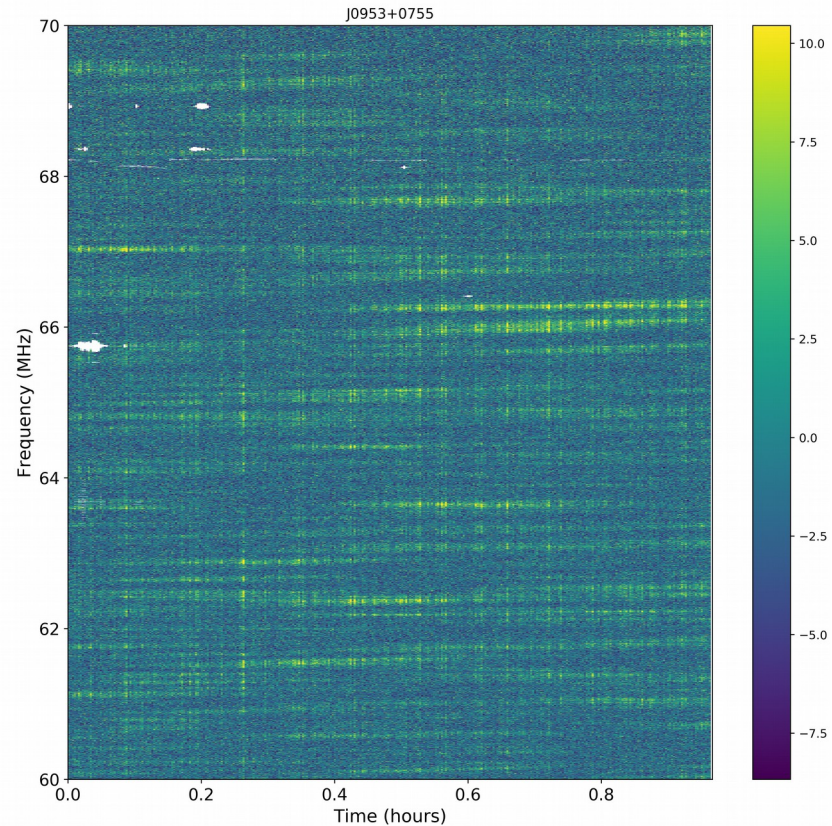
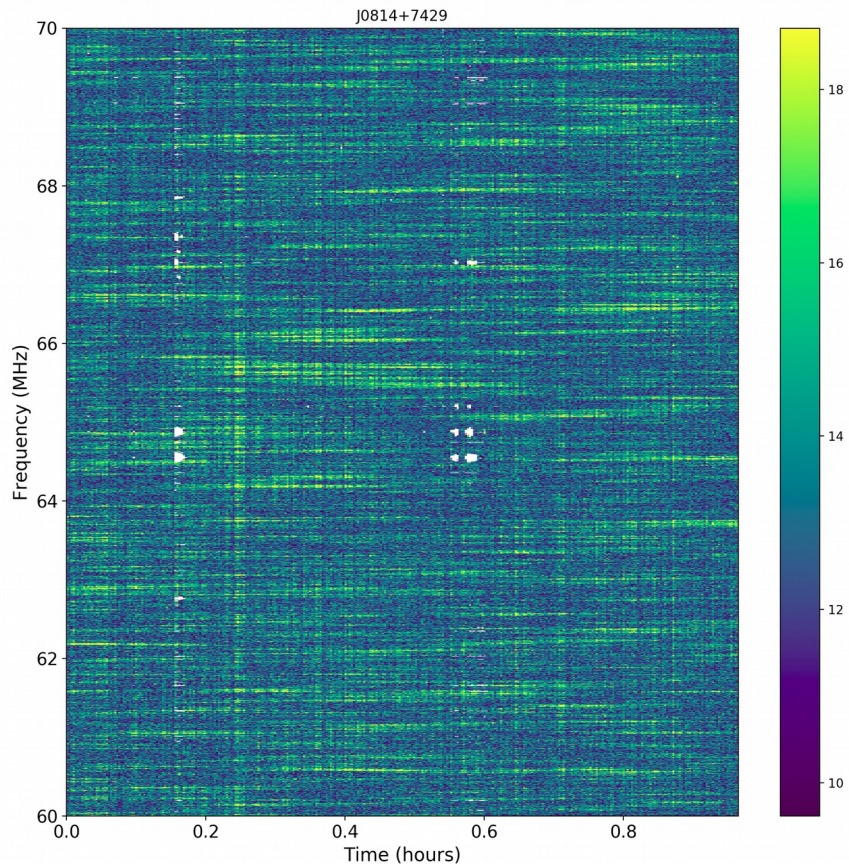


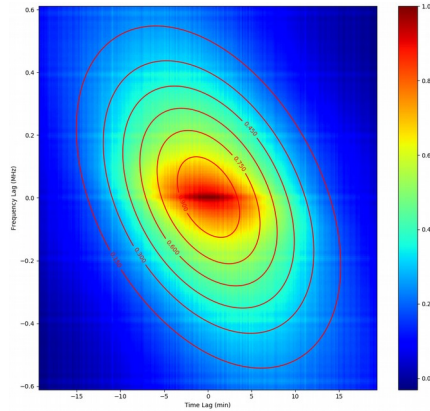
Scintillating Pulsars



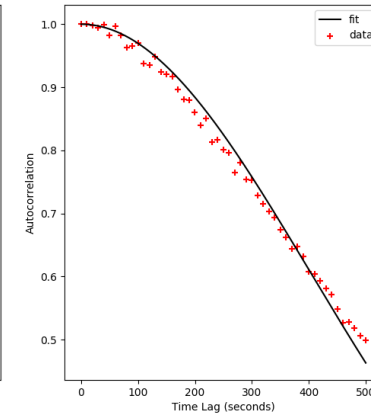
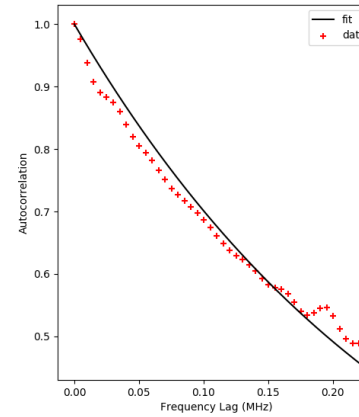
The scintillation parameters

1. Scintillation bandwidth and time-scale

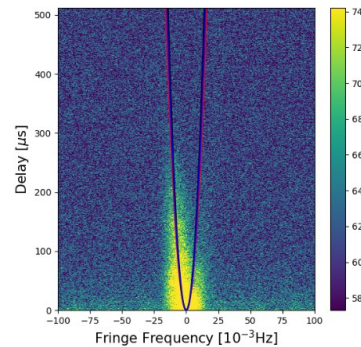
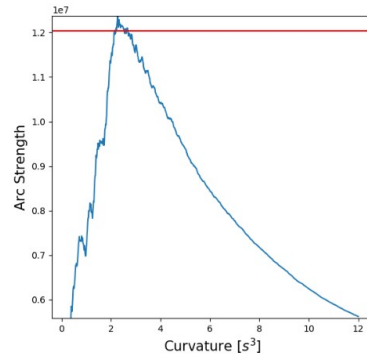
1.1, 2D Gaussian Fit to the full ACF



1.2 1D fit to the center of the ACF



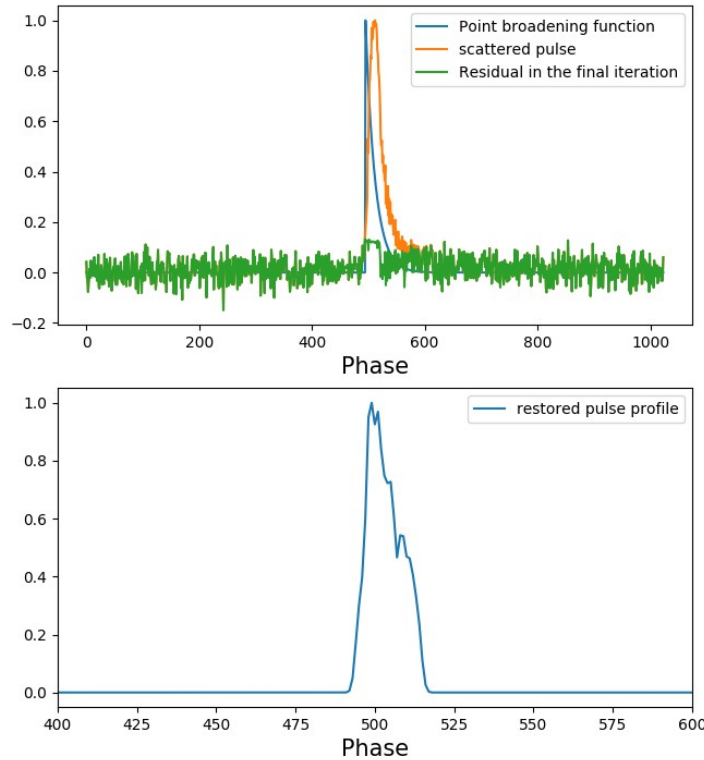
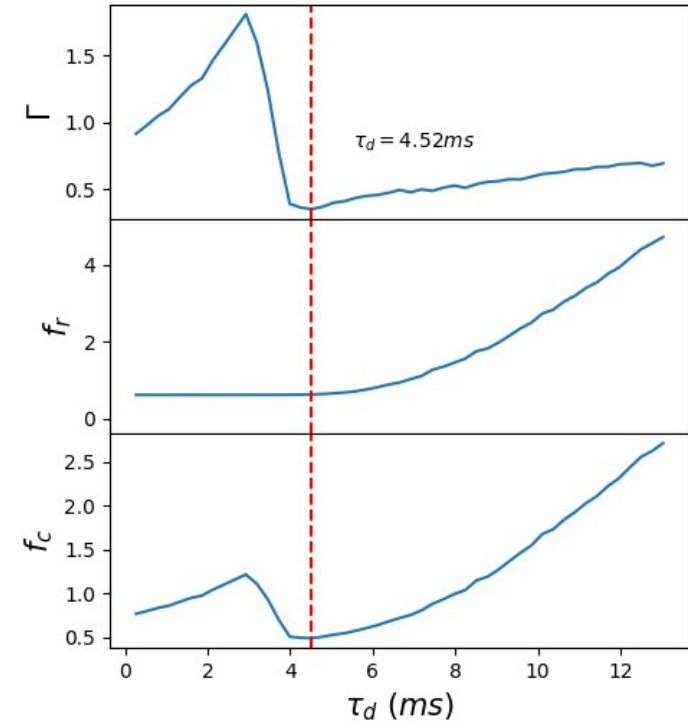
2. Arc curvature



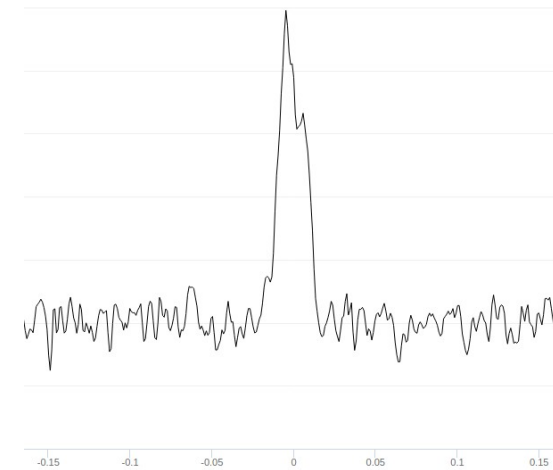
Other propagation effects

- Pulse Broadening: *Clean algorithm*

J0139+5814
at 185.1 \pm 0.9 MHz

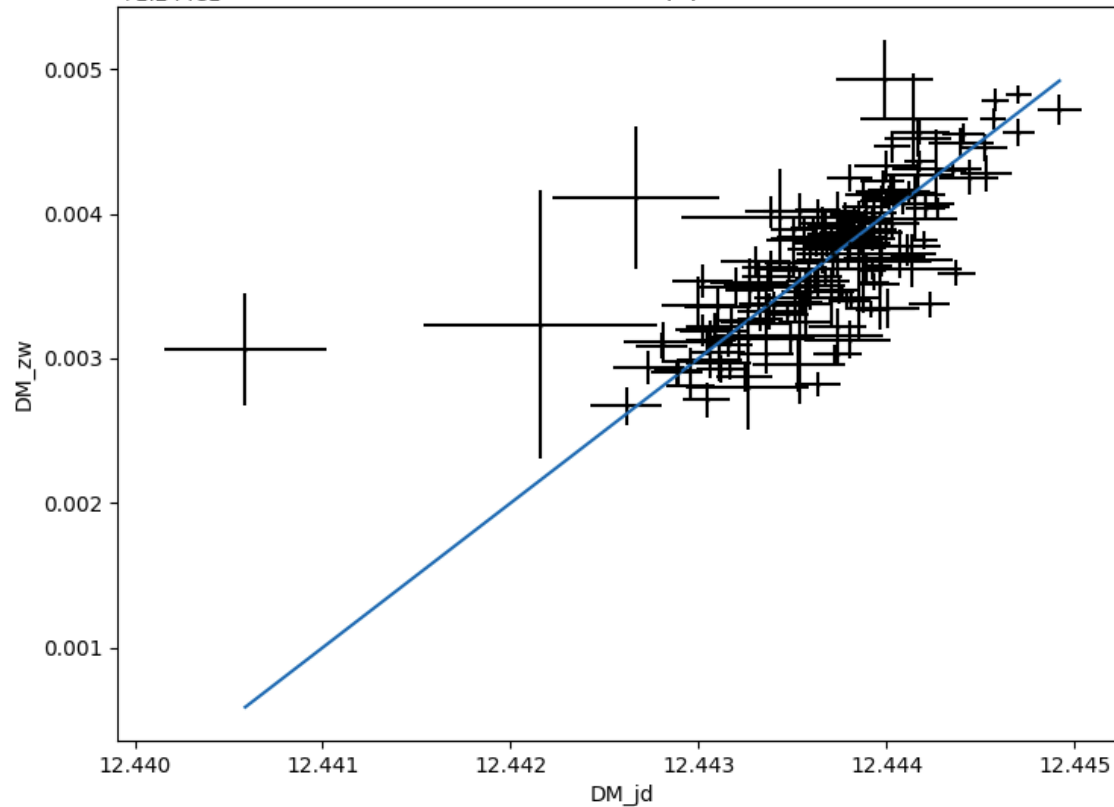


EPN, 4850 MHz:

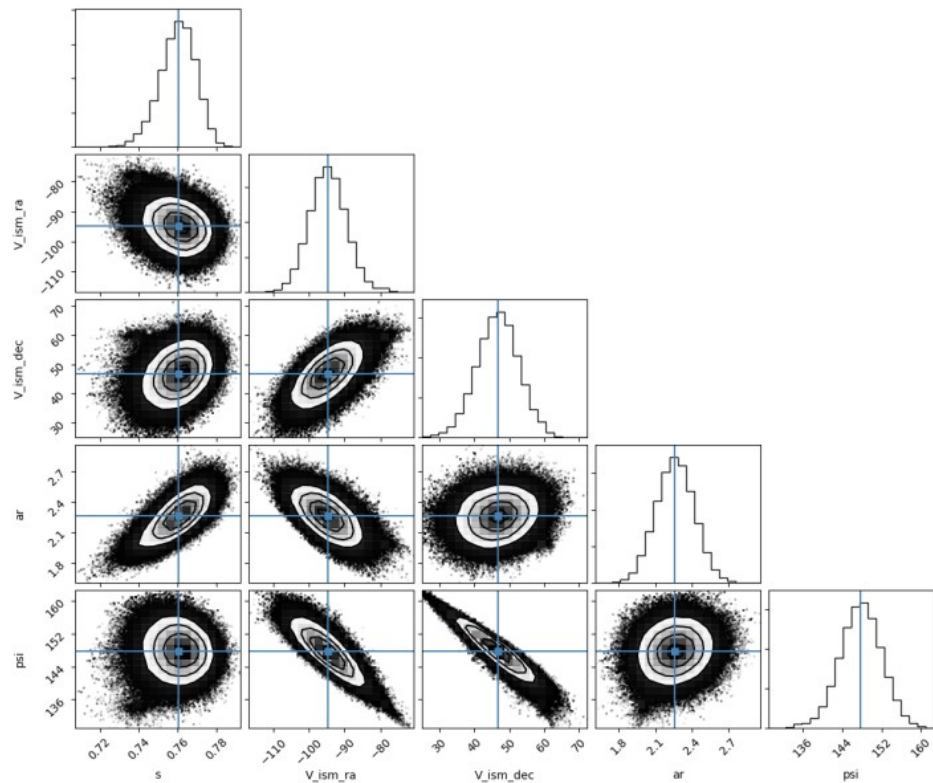
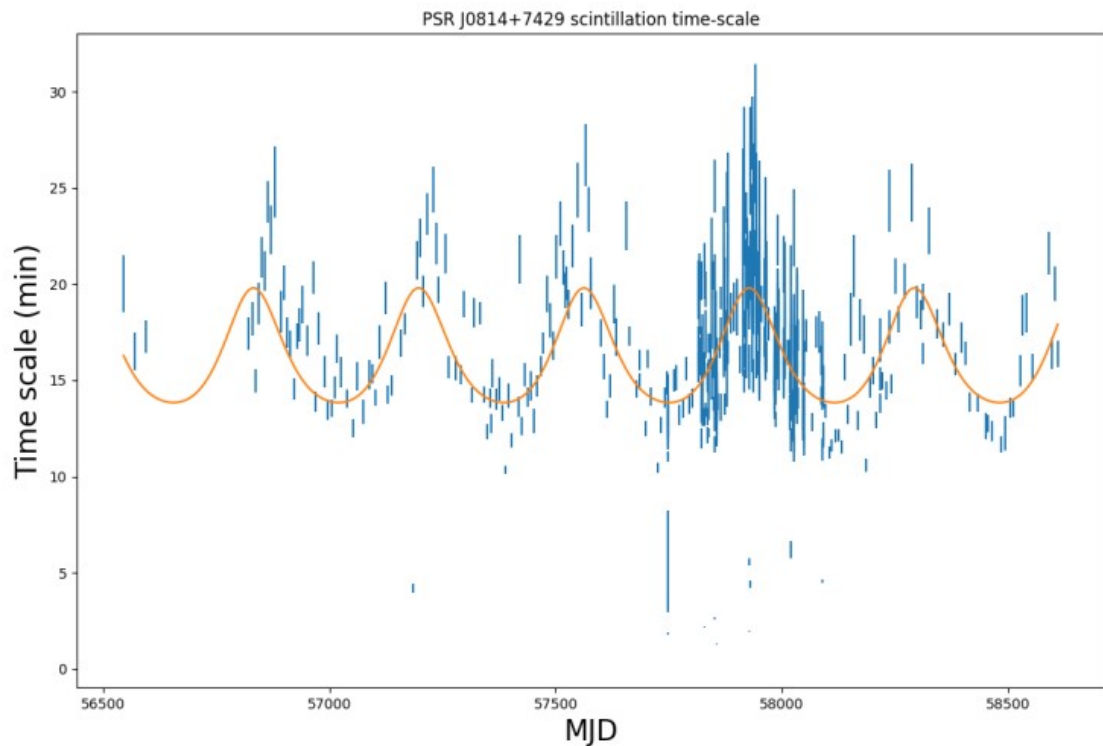


Other propagation effects

- DM

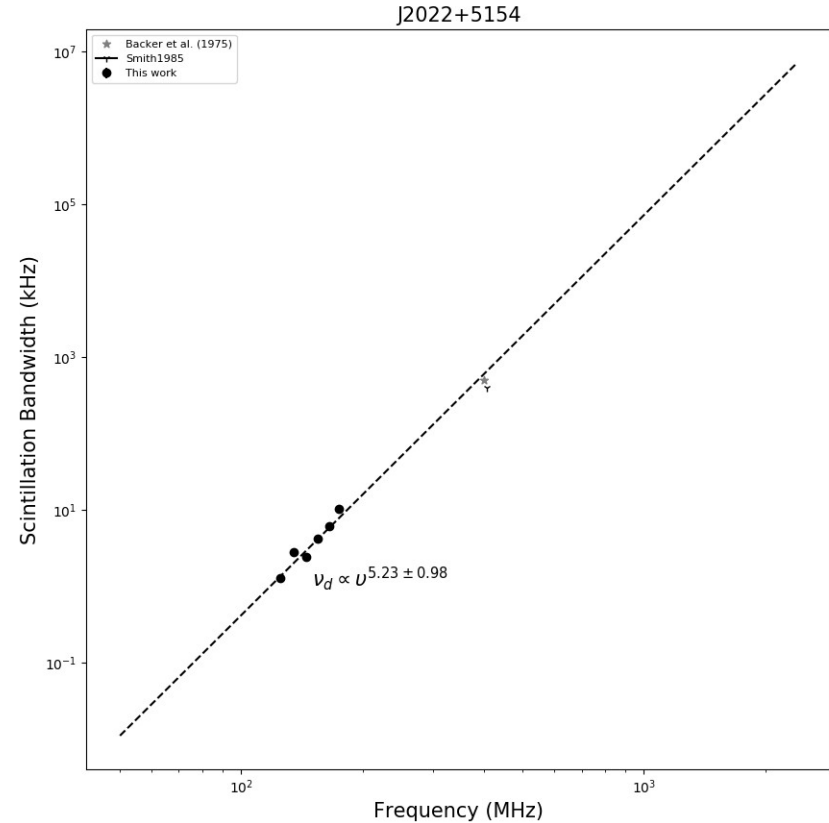
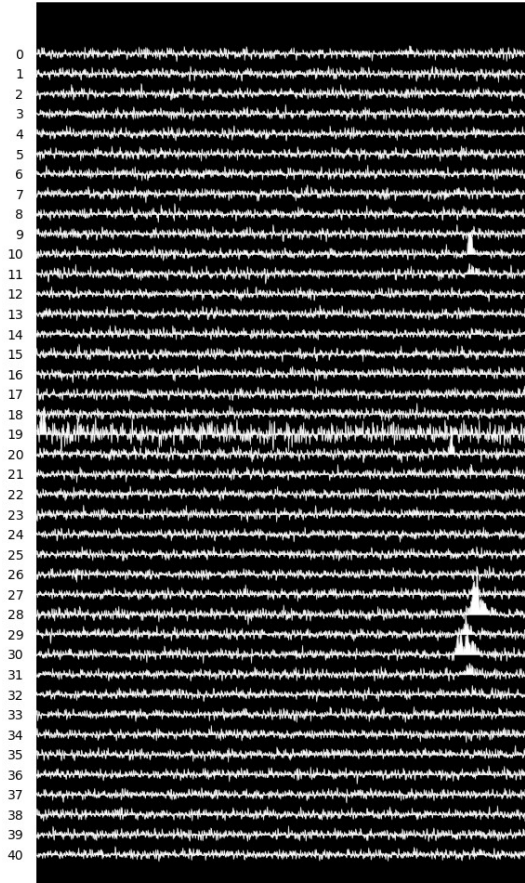


Model the IISM



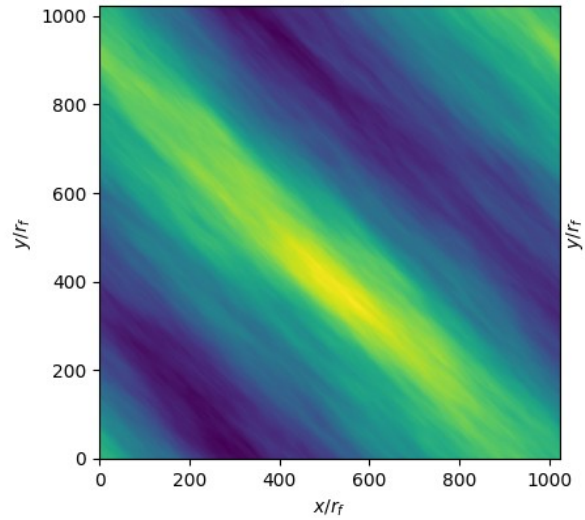
Pulse Nulling

B2021+51:

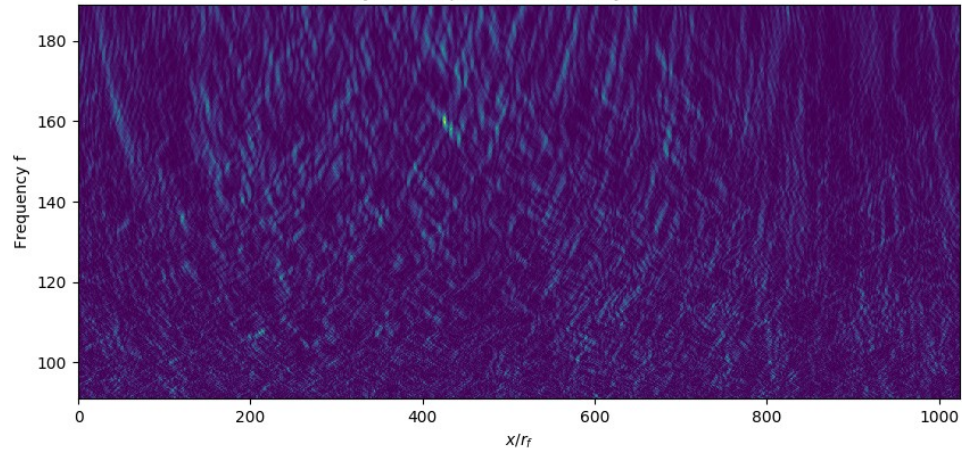


Correction of TOA Variation

Screen phase



Dynamic Spectrum (Intensity/Mean)



DM

